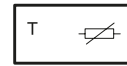


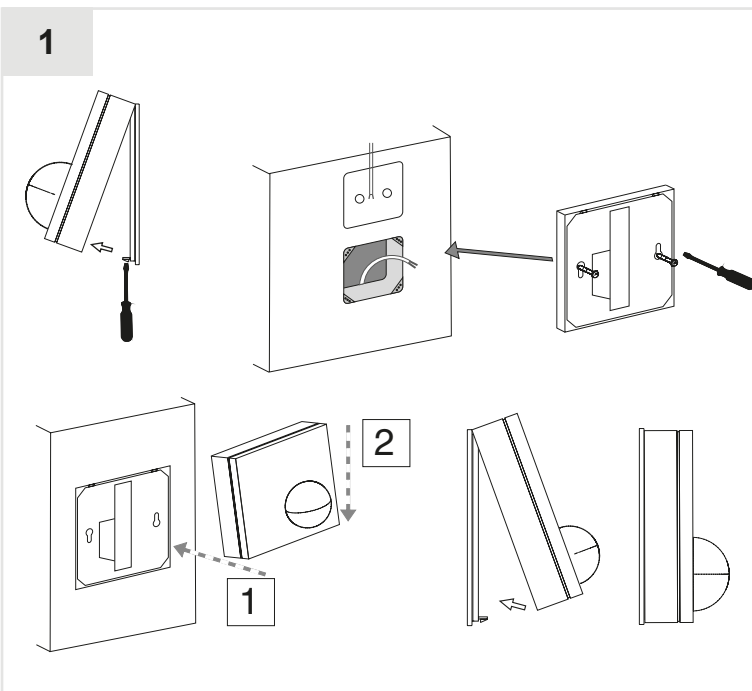
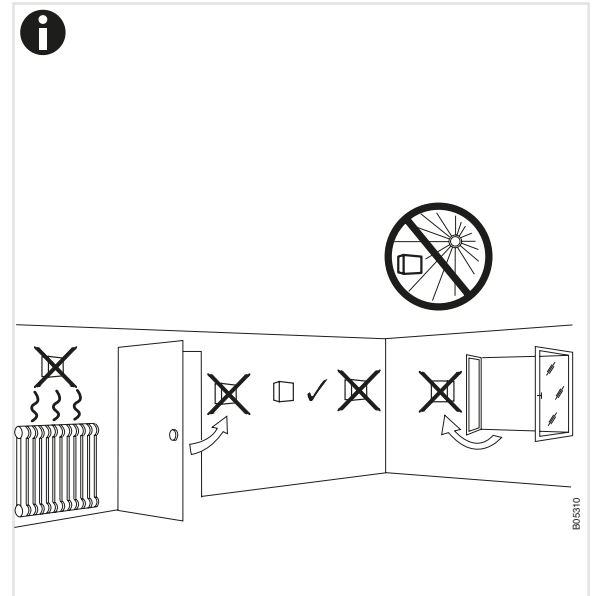
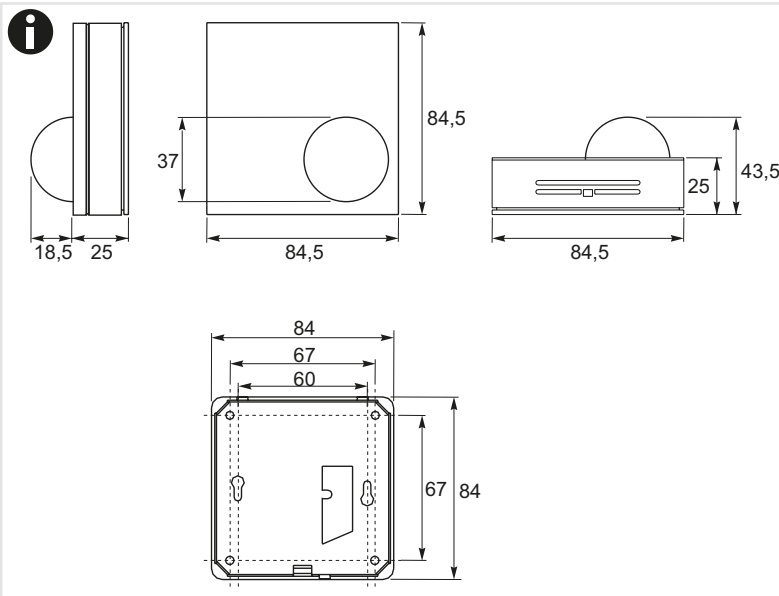
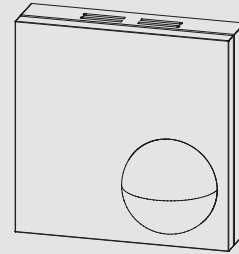
de Strahlungstemperaturfühler
 fr Sonde de température radiante
 en Radiation temperature sensor
 it Sensore di temperatura radiante
 es Sonda de temperatura radiante
 sv Strålningstemperaturgivare
 nl Stralingstemperatuursensor

de Montagevorschrift
 fr Instruction de montage
 en Fitting instructions
 it Istruzioni di montaggio
 es Instrucciones de montaje
 sv Monteringanvisning
 nl Montagevoorschrift



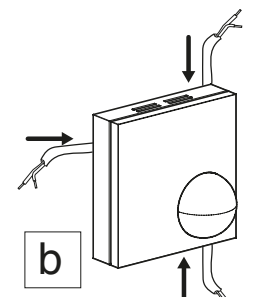
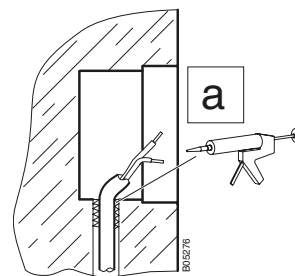
de Installationsanweisung für die Elektrofachkraft
 fr Notice d'installation pour l'électricien
 en Guidelines for the electrician
 it Informazioni per l'installatore elettrico
 es Instrucciones de instalación para el electricista
 sv Installationsinstruktion för behörig elektriker
 nl Installatie aanwijzing voor de elektromonteur

de Für den Einsatz in üblicher Umgebung
 fr Pour usage dans un environnement normal
 en For use in normal environments
 it Per impiego in ambiente usuale
 es Para el uso en ambiente normal
 sv För användning i normal miljö
 nl Voor toepassing in normale omgeving



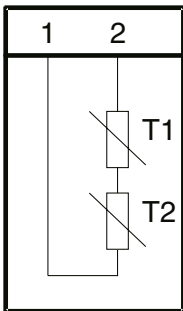
de abdichten
 fr rendre étanche
 en seal

it otturare
 es junta
 sv avtätning
 nl afdichten



de Kabeleinführung
 fr Insertion du câble
 en Cable inlet
 it Guidacavo
 es Entrada de cables
 sv Kabelingång
 nl Kabelinvoer

2



		R (T1 + T2)
EGS100F705	Ni1000	1 k Ω (0° C)
EGS100F706	NTC	10 k Ω (25° C)
EGS100F707	NTC	22 k Ω (25° C)

de Dokument aufbewahren
 fr Ce document est à conserver
 en Retain this document
 it Conservare il documento
 es Guardar el documento
 sv Spara dokumentationen
 nl Document bewaren

© SAUTER Deutschland
 Sauter-Cumulus GmbH
 Hans-Bunte-Str.15
 79108 Freiburg
 Telefon +49 (761) 5105-0
 Telefax +49 (761) 5105-234
 E-Mail: sauter-cumulus@de.sauter-bc.com
<http://www.sauter-cumulus.de>